

# TEL AVIV UNIVERSITY

## International BA in Liberal Arts



The Lester and Sally Entin	הפקולטה למדעי הרוח
Faculty of Humanities	ע"ש לסטר וסאלי אנטין
The Multidisciplinary Program in the Humanities	התכנית הרב תחומית במדעי הרוח
B.A. in Liberal Arts	לתלמידי חו"ל

# WELCOME TO TEL AVIV UNIVERSITY INTERNATIONAL

We congratulate you on your admission to Tel Aviv University International. Soon, you will become a part of the Tel Aviv University family, which boasts a highly acclaimed faculty, a top-tier student body, and international prestige.

You will join other students from all over the world to embark on a unique personal and academic journey. Your experience will surely prove both challenging and rewarding.

Tel Aviv University International is here to help you get acclimatized to your new environment and complement your academic experience with an array of services and activities. We invite you to take full advantage of the unique opportunity to live in Tel Aviv, the epicenter of Israeli culture. Being a part of the largest university in Israel allows you to enjoy the many state-of-the-art facilities and a variety of social and athletic clubs on campus.

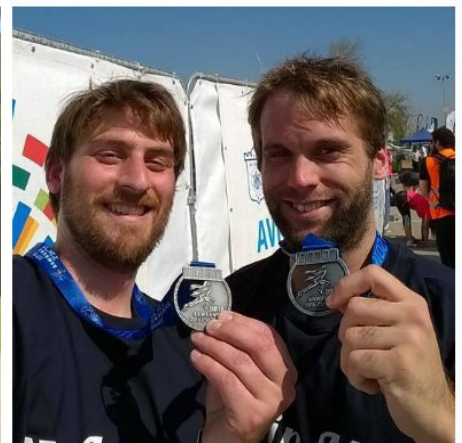
Our dedicated staff in the USA, Canada, and on campus (us included), are here to accompany and support you on your journey. We want to make sure that you have a rewarding and enjoyable experience during your stay with us at Tel Aviv University and hope to create a life-long connection with you.

With warmest regards,

Professor Raanan Rein  
Vice President, Tel Aviv University

A handwritten signature in black ink, appearing to read "R. Rein". The signature is written in a cursive, flowing style with a large initial "R" and a smaller "Rein" following it.

# HANDY INFORMATION



## CAMPUS MAP



Click [here](#) to find the building you are looking for.

## Academic Calendar 2019-20

### Fall semester

#### Liberal Arts program

Orientation day for new students	23.10.19
Start of Liberal Arts fall semester	27.10.19
Rabin Memorial (no classes between 12.00-13.00)	10.11.19
Hanukah holiday (no classes)	29.12.19
Final day for three credit Liberal Arts courses	02.01.20
Final day for two and four credit Liberal Arts courses	26.1.20

#### OSP program

Start of OSP fall semester	23.10.19
Final day of OSP fall semester	20.12.19

## Spring Semester

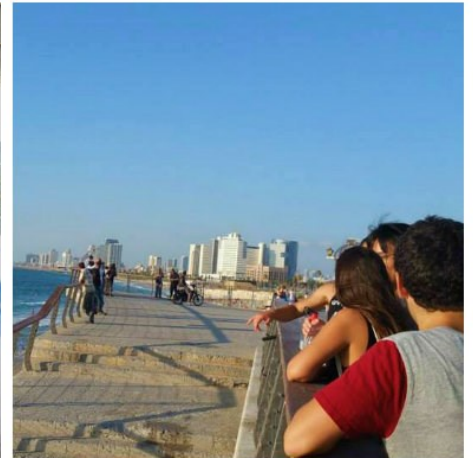
#### Liberal Arts program

Start of Liberal Arts spring semester	08.03.20
Purim holiday (no classes)	10.03.20
Classes run according to Thursday schedule	05.04.20
Passover holiday (no classes)	06.04.20 - 18.04.20
Holocaust day ceremony (no classes between 12.00-13.00)	21.04.20
Ceremony for fallen soldiers (no classes between 12.00-13.00)	27.04.20
Memorial Day (no classes)	28.04.20
Independence Day (no classes)	29.04.20
Shavuot holiday (no classes)	28.05.20
Student day (no classes after 12.00)	04.06.20
Final day for three credit Liberal Arts courses	04.06.20
Final day for two and four credit Liberal Arts courses	26.06.20

#### OSP program

Start of OSP spring semester	24.02.20
Final day of OSP spring semester	14.05.20

# BEFORE YOU LEAVE



## Payment Options

Tuition fees include administration fees, health insurance, access to university libraries, and a number of social events and trips. Your online account profile serves as your bill and record of payment. Please note that all tuition fees are due in advance. Students may not enter the dormitories or begin classes until fees are paid in full or alternate arrangements with Tel Aviv University International are confirmed in writing.

All fees are payable via the payment methods listed below:

- An Israeli bank check or a personal check made out to 'Tel Aviv University'.
- A credit card: Visa, MasterCard, Discover Card and American Express are accepted through your online profile.
- A deferred payment plan: a plan of equal, interest-free payments can be designed for you. Please contact our office for specific information and to set up your plan. The cost of the payment plan is \$100.
  - o For DPP with credit card (all countries besides Canada) - via the US office:  
[PDunn@telavivuniv.org](mailto:PDunn@telavivuniv.org)
  - o For DPP with credit card only for Canadians- via the Canada office:  
[orna@cftau.ca](mailto:orna@cftau.ca).
  - o For DPP with checks (only from Israeli accounts) - via the Israeli office:  
[intl@tauex.tau.ac.il](mailto:intl@tauex.tau.ac.il)
  - o For DPP with checks (only from American accounts) - via the US office:  
[PDunn@telavivuniv.org](mailto:PDunn@telavivuniv.org)
- Government-sponsored student aid/loans.
- External scholarships disbursed directly to TAU.

## Conditional Fees

- **Bank Fee:** Bounced checks incur a \$40 fee and cancellation of any payment plan.
- **Cancellation Fee:** A fee is incurred if withdrawing after the first day of classes. Please check Letter of Agreement for details.
- **Collection Fees:** Tel Aviv University may utilize the services of an attorney and/or collection agent to collect any amount past due, and you will be charged an additional amount equal to the cost of collection (approximately 33% of your outstanding balance) as well as any other fees incurred by Tel Aviv University.

## Refund Policy

Notifications of withdrawal must be made in writing. Refunds are determined by the date of our receipt of the notice. All refunds listed below are in addition to the mandatory **\$500 cancellation fee**.

### Tuition:

- Withdrawal prior to or on the first day of class: 100% of tuition minus confirmation fee and cancellation fee.
- Withdrawal after the first day of class, but no later than 5 days after the beginning of classes: 50% of tuition minus confirmation fee and cancellation fee.
- Thereafter (if enrolled for a single semester): no refund.
- Thereafter (with respect to enrollees for the academic year withdrawing during the first term): second-semester tuition portion and summer semester tuition portion minus confirmation fee and cancellation fee.
- Thereafter (with respect to enrollees for the academic year withdrawing during the second or summer term): no refund.
- Withdrawal on the first day of USA federal loan disbursements or thereafter: determined by the department of ed. as per the Return Policies.
- Tuition assistance, grants and scholarships are contingent on successful completion of the course of studies. For clarity: early withdrawal cancels scholarship assistance and makes the student liable for the full tuition as covered in the aforementioned clauses.

### Dormitories:

Students will be charged for the dormitories in full, once confirming that they will be living on-campus.

Students leaving the dormitories after the beginning of the program will be charged the entire fee for the duration of the program, unless otherwise agreed in writing. TAU is unable to refund students for early withdrawal from the dorms.

Students will be asked to submit a security deposit form; they will be charged for any damage, missing contents, or negligence.

## **Late Payment**

Students are responsible for making payments on time. Students are also responsible for any late payment charges on amounts that are overdue. Late payment fees of \$100 will be added to overdue charges for every 30 days of delinquency. In addition, late payments may lead to cancellation of students' payment plan, if one exists, and eventually to collection fees. In any case, students will not be permitted to register for classes or receive a diploma or transcript if they have an outstanding payment balance.

## **Dismissal**

Tel Aviv University reserves the right to dismiss any student whose conduct or academic standing warrants such action. In the event that a student is asked to leave the program, no refund is forthcoming. Please refer to the Letter of Agreement.

## **Withholding diplomas and Transcripts**

It is Tel Aviv University policy to withhold diplomas and transcripts if all financial obligations have not been met. In the event that a diploma or transcript is withheld due to an unpaid bill, a student will be required to make payment in order to release any of the aforementioned documents.

## **Funding and External Scholarships**

### **Federal Loans for American Citizens**

If you are interested in obtaining loans for your tuition, please contact Ms. Phylicia Dunn at (212) 742-9030, extension 115, or via email at [PDunn@telavivuniv.org](mailto:PDunn@telavivuniv.org).

If you have already spoken with Phylicia regarding loans, then follow the details of the loan application process that appear below:

1. Complete and Submit the Free Application for Federal Student Loans (FAFSA)
2. Select Tel Aviv University from the Foreign drop-down menu (make sure the DLIL is G08373)
3. Confirmation Fee to TAU International must be paid.
4. Respond to award letter sent to you via email from Ms. Dunn.

5. Go to <https://studentloans.gov/mydirectLoan/index.action> and sign in with your User ID and Password from FAFSA to complete Required Entrance Counseling and Promissory note for all requested loans.

It is important to check that you have submitted all required documents and that the information is accurate. Once you have finished this process, the application will be certified for origination within 1 week.

## Masa

[MASA](#) (which means 'Journey' in Hebrew) is a partner of Tel Aviv University's international programs. Masa is an initiative of the government of Israel and the Jewish Agency for Israel to promote participation in long-term programs in Israel, including academic degree programs. Throughout the academic year, MASA sponsors a variety of programs, sometimes at an additional cost. Examples of activities open to all international students, regardless of religion or nationality with specific focus on graduate students are weekend retreats with speakers and outdoor hikes, as well as concerts. Details will be given during orientation week.

## Masa Requirements for TAU:

The following are the current MASA requirements for students who receive a MASA grant or scholarship:

1. **Hebrew:** Students are required to take 120 hours of Hebrew-language courses, all of which will be fulfilled by completing the summer intensive Ulpan or by taking two consecutive semesters of Hebrew during the academic year.
2. **Volunteer work:** Students must perform 3 hours of volunteer work a week (12 hours per month). TAU International organizes a panel on volunteering. Please note: Volunteering in political organizations, parties or movements as well as commercial organizations will not be considered volunteer work.
3. **Extra-curricular activities:** TAU International organizes several trips throughout the academic year (to Tel Aviv, to the Holocaust Museum and to the South). In addition, individual programs sponsor their own field trips. MASA recipients must participate in all.
4. **Activities with Israeli students:** All the international graduate students are part of the Buddy System. At least once a month, there is a joint activity for both international and Israeli students.

## Other Scholarships

Please review our website for other scholarship opportunities:

[https://international.tau.ac.il/scholarship\\_programs](https://international.tau.ac.il/scholarship_programs)

## Travel Documents

### Passports

All visitors to Israel must hold a passport that is valid for at least six months from the date they enter the country. In order to enter Israel as a student, you must have a passport that is valid for at least one year from your date of entry into the country. If you do not have a valid passport, apply for one immediately. If you hold an Israeli passport, you are required to present it upon arrival.

### Visas

Students who do not hold an Israeli passport may want to consult with the Israeli Embassy in their home country regarding visa and entry regulations.

**A. All students must apply for a student visa (A-2) prior to their departure.** The A-2 Student Visa is a multiple-entry visa valid for one year, meaning that you may enter Israel an unlimited number of times for a period of one year without securing a new visa. Student visas are renewable after one year both in Israel and abroad. You must apply for an A-2 visa in person at your nearest Israeli consulate. Please note: It is illegal to study in Israel on a tourist visa. You may refer to Israel Ministry of Foreign Affairs [website](#) for more information.

The following is a checklist for this procedure:

1. [Form](#)
2. Valid passport
3. Passport-sized pictures
4. Acceptance letter to the program
5. Proof of sufficient funds (a bank statement is acceptable)
6. Scholarship statements, if relevant (this assists section 5)
7. Fee of 47 dollars

**B.** A student visa does not allow you to work in Israel.

C. Some students will not be able to enter Israel without receiving a student visa ahead of time because they are not automatically granted tourist visas upon arrival to Israel.

D. If for some reason you could not apply for your student visa before leaving your home country, you must take care of it immediately upon arrival in Israel at the Ministry of Interior (See "A" above for the checklist).

Ministry of Interior details:

Salame 53, Tel Aviv

Office hours: Tuesdays and Thursdays, 08:00am – 09:00am

For issues regarding visas, please contact the Tel Aviv University International office: [intl@tauex.tau.ac.il](mailto:intl@tauex.tau.ac.il) or telephone: +972-3-6408118.

### **Israeli Born & Returning Citizens**

If you are a returning Israeli citizen or are the child of a parent who holds Israeli citizenship, please contact the nearest Israeli Consulate to clarify your legal status in advance of entering the country. Israeli citizens or children of Israeli citizens should apply for an exemption from military service through their nearest Israeli Consulate before arrival in Israel.

It is also recommended to contact Nefesh B'Nefesh - <http://www.nbn.org.il/> - which is a great resource on topics relevant for olim (new immigrants), returning citizens, and children of Israeli born parents.

## Packing Essentials

### Clothing

Campus dress is fairly casual. Most students attend classes and campus events in jeans and T-shirts. Women may want to bring modest attire (skirts or dresses that cover the shoulders and knees) for visits to religious sites in Israel. Both women and men should plan to bring semi-formal attire for professional meetings and networking, special occasions and nights out. As dry cleaning is relatively expensive in Israel, please bring clothes that can be easily cleaned.

Most of the year is warm or even hot. During the hot summer months, the traditional casual dress code becomes even more relaxed - if you are sensitive to air conditioning, make sure to pack a few sweaters or a shawl. In the winter, warm clothing is necessary, as many buildings are neither centrally heated nor well insulated. From December until March, the weather can be rainy, damp, and cold.

For class trips as well as your own sightseeing, a pair of good walking shoes is a must.

### Cosmetics and Toiletries

Cosmetics, toiletries, and other personal supplies are readily found in Israel, although they might be more expensive than in your hometown, and specific brands are not always available.

### Medication

**If you are taking a prescribed medication, you should bring a supply to last the duration of your time in Israel. It is also recommended that you bring a typewritten, generic prescription for your medication should you need to have it refilled.**

Since some medication might not be available in the same brand names in Israel, it is essential that a generic name be provided for reference by a local doctor or pharmacist. Also, in the event that you are sent an additional supply of medication by mail, you will be required to present a prescription to the Israeli Customs Office before the medication is released.

### Electrical Appliances

Electrical appliances should be kept to an absolute minimum. Because of Israeli customs restrictions, a limit on electrical appliances is advisable. The electrical current in Israel is 220 volts, 50 cycles. You may be able to bring a transformer for certain appliances, such as a hair dryer. Some appliances cannot be converted. Be sure to check with an authorized electronics

dealer for detailed information. Most laptops do not need transformers, but require a small inexpensive adaptor.

## **Flights and Arrival**

You are responsible for making your own travel arrangements; please check with your specific program coordinator as to the latest date you may arrive before the program starts.

## **Baggage Information**

Please contact your airline operator regarding baggage regulations.

Experience has shown that it is best to take your belongings with you and to check them on the flight. It is not recommended to ship luggage to Israel for the duration of your stay, as incoming goods may be taxed if they are shipped. This is the case even if they are your own personal items and even if they are used. Further problems may arise, as there is no way to know exactly how long your shipment will take to arrive. In addition, packages shipped by sea will arrive at the Port of Haifa, which is more than an hour away from Tel Aviv. You will have to get to Haifa, take the shipment through customs, declare all items, and then transport your luggage from Haifa to your apartment. Former participants have said that if you have an extra piece of luggage, you are bringing too much. However, if you must, it is worthwhile to avoid shipping and pay the extra charge for each additional piece of luggage taken on your flight.

## **Arrival**

At Israel's Ben Gurion International Airport (known by its Hebrew acronym 'Natbag'), your first step is passport control. Please note that passport control might take some time depending on how busy the airport is and how many questions the officers have for you. Come prepared with your acceptance letter to show the inspectors. Make sure that you have made arrangements for housing, to meet with friends or family, or to stay in a youth hostel when you arrive.

Upon your arrival at Ben Gurion Airport, there are two main ways to get to Tel Aviv:

- **Train:** From the arrivals hall, follow the signs to the train station, which is located just outside the main doors of the airport terminal. Train tickets can be purchased from automated ticket machines. The train from inside the airport terminal has four stops in Tel Aviv.

You may need to take a taxi or bus from the station to your final destination. The train also goes to Haifa, Jerusalem, and many other cities in Israel. Take into account that if you arrive on a Saturday, there is very limited train service. In general, trains run up to an hour before sundown on Friday, and resume running on Saturday night approximately an hour after sunset. For information on schedules and fares, call Israel Railways Information Service at 03-6117000 or \*5770 from any cellular phone in Israel. You can also look up schedules on the Israel Railways website: <https://www.rail.co.il/en>

- Taxis: Just outside the arrivals hall is the taxi queue. There is a flat fare for Tel Aviv of approximately 150 NIS (the price will be higher on Friday night or Saturday). If you ask a taxi driver to turn the meter on, s/he is required by law to do so; if s/he claims the meter is broken, get a new taxi. Only accept taxi service from those in the designated queue outside of the arrivals hall at the airport. Taxi drivers do not expect to be tipped. In addition, there are shared taxis, called a monit sherut, which go to Haifa and Jerusalem. They usually cost around 70 NIS. Taxis in Israel **do not** take credit cards - make sure you have cash on you when boarding a taxi

For general information on transportation to and from Ben Gurion Airport go to:

<http://www.iaa.gov.il/Rashat/en-US/Airports/BenGurion/InformationforTravelers/TransportationToandFromtheAirport/>

Dorms Residents - please do not bring your luggage to the university campus – First go to your housing accommodations and check in there.

## Medication

The safety of our students is our highest priority. Like all public institutions in Israel, Tel Aviv University employs a network of security personnel covering all campus entrances and patrolling throughout the campus and dormitory complex 24 hours a day. Students should be prepared to show student cards or other picture ID and submit bags for search.

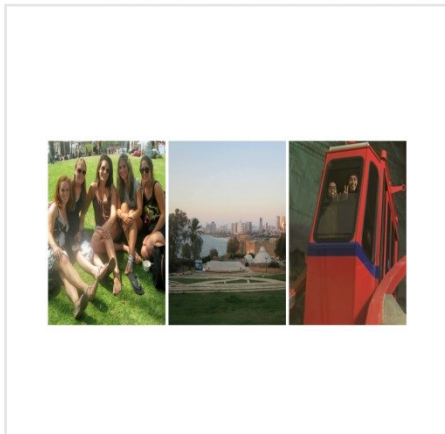
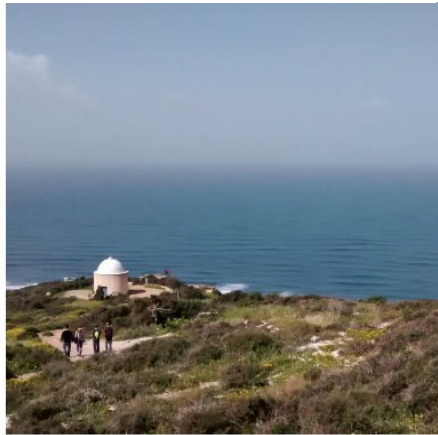
The University's Security Department maintains close contact with government security agencies. The international student population is regularly updated regarding security matters and receives copies of all relevant official communications. Specific security information will be given at the student orientation.

Additionally, foreign citizens are advised to register with their local embassy. This can be done either in person, or online, in many cases. Finally, during orientation and periodically, our security officers will brief students on safety issues and updates.

Tel Aviv University International also recommends all students to carry a mobile telephone (see details under “Telephone Services”). This allows our staff to contact all program participants at any time via SMS text messages or group messaging.

Finally, students are advised to carry some form of government-issued photo identification at all times. International students may want to also carry a photocopy of the first page of their passport.

# HOUSING



## Dormitory Facilities

### General Information

The two relevant dormitory complexes are adjacent to campus.

The official check-in day to the dormitories is on **Tuesday, October 22<sup>nd</sup> 2019 8am to 4pm.**

During orientation day, Tel Aviv University International will conduct an information session on housing, where the rules and regulations will be provided in detail.

Please note that the following items are not supplied by the University: blankets, pillows, towels, kitchen utensils, and household goods. Students may bring their own linens and electrical appliances or choose to buy from an Israeli company. The following quantity of linen is usually sufficient: two blankets, two to four sheets, two pillowcases, one pillow, and four towels. Please note that beds in the dorms are slightly longer and narrower than American twin beds.

Management of the dormitories is handled by a third-party company (*Shikun U-Binu'i*), which should be contacted directly regarding any maintenance-related issues. Contact information will be provided upon entrance to the dorms.

**For any inquiries regarding housing please be in touch with the housing department:**  
[housing@tauex.tau.ac.il](mailto:housing@tauex.tau.ac.il)



### Einstein Dormitories

The Einstein student dormitories are located across the street from the Tel Aviv University main entrance (to the west). **Shared rooms** are available there for our international undergraduate students.

Each dormitory suite is divided into two bedrooms; two students sharing each bedroom. Each suite is fully furnished and includes a new kitchen and bathroom, air conditioning, Wi-Fi, and cable TV. The dorms are inspected upon move-in and any damage done during students' stay will have to be

covered by the students. A self-service laundry and a small gym are located within the dormitory complex. Additional laundry and cleaning facilities are available in nearby shopping centers.

Prices are 650 USD month for a shared room, utilities and municipal tax included. Students who are living in the dorms are expected to sign a contract and pay in advance. Students who wish to room with a friend may indicate this on their Confirmation Form.



Inside an Einstein dorm room

## Off campus Living

Many international students choose to live in nearby off-campus apartments. Sharing a standard apartment with one or two roommates may cost the same as the dorms.

If you live in Ramat Aviv, you can walk to TAU. Living in the city center allows you to have access to the beach and the city action. From the city center, the bus takes anywhere from 20 to 40 minutes to reach the university. The first question to ask yourself when looking for housing is: whether you prefer to live near the university in Ramat Aviv or in central Tel Aviv. Please refer to the map of Tel Aviv at the beginning of this booklet.

Apartment hunting in Tel Aviv can be quite time consuming, and the process might be lengthy. This can be partially explained by the extremely fast-moving market. **Students are advised to set time aside specifically for apartment hunting prior to the start of the program.** Two to three weeks are recommended for apartment searching.

There are plenty of real estate brokers but expect to pay one month's rent as a finder's fee if you find an apartment through them, plus 17% VAT.

Students may want to consider finding a short-term rental for the first couple of weeks while looking for a permanent apartment.

Airbnb is very popular in Tel Aviv and you might find great solutions for short term housing:

<https://www.airbnb.com/s/Tel-Aviv~Yafo--Israel>

Hostels can be a great option for short term solutions:

Name	Street/ Tel Aviv	Tel	Email
Abraham Hostel	21 Levontin	(972) 3-6249200	infotlv@abrahamhostels.com
Arbel Hotel Apt	11 Hulda	(972) 3-5225450	sales@arbelhotel.com
Bnei Dan Hostel	36 Bnei Dan	(972) 2-5945655	telaviv@iyha.org.il
Dinami Apt	7 Shaul Avigdor	(972) 3-7414795	dinami@internet-zahav.net
Dizengoff Square Apt	89 Dizengoff	(972) 3-5241151	neeamam@netvision.net.il
Dizengoff Suites Apt	39 Gordon	(972) 3-5234363	info@dizengoffsuites.co.il
Holiday 2002 Apt	113 Dizengoff	(972) 3-5271438	dyszelg@netvision.net.il
Holiday Rentals	37 Reines Street	(972) 3 951 3964	Office@Holiday-Rentals.co.il
Ben Yehuda Apartments	119-121 Ben Yehuda st.	(972) 3-5229393	officeteam@tel-aviv-rental.co.il
Rothschild Residence	71 Rothschild	(972) 3-6290555	contact@rothschild-residence.co.il
Name	Street/ Tel Aviv	Tel	Email
Sea Hotel Tel Aviv	76 Herbert Samuel St.	(972) 3-7952465	sea@sea-hotel.co.il
Sealand Apt	84 Bnei Dan	(972) 3-5225450	info@sea-land.co.il

Depending on a variety of factors, you should be prepared to pay anywhere from NIS 2500 (living with 1-2 roommates) to NIS 3600 (living alone) per month for a partially furnished apartment. The following websites will help you in your search:

- [Yad2](#): (Hebrew)
- [Janglo](#): (English)
- [Taanglo - Facebook](#)
- [Tanglo - Yahoo group](#)
- [WinWin](#): (Hebrew)

- [Homeless](#): (Hebrew)
- [Flat Club](#): (English)
- [Craigslist](#): (English)

### Facebook groups:

We have created a FB group for students who are leaving to be able to pass on their apartments to incoming students. We hope to get more activity as we approach the beginning of the next academic year: [TAU International off campus housing](#)

Note: Some of the groups maybe closed groups, meaning you should ask to join and the administrator needs to approve the request.

- [Secret Tel Aviv Facebook Group](#)
- [Tel Aviv Apartments Buy Rent Sell Trade!!!!](#)
- [החדש העמוד אביב בתל לאוזן מפה דירות](#)
- [Internationals in Tel Aviv](#)
- [Apartments for singles or couples in Tel Aviv](#)
- [Apartments in TLV Old North and Downtown](#)
- [Apartments/roommates in Tel Aviv](#)
- [אביב בתל חברים בין והחלפה להשכרה דירות](#) (Hebrew)
- [בהומלס שמתפרסמות לפני, אביב בתל חברים בין ריקות דירות](#) (Hebrew)
- [Looking for an Apartment in Tel Aviv...](#)
- [Tel Aviv Apartments אביב תל דירות](#)
- [אביב בתל ח"ש 3000 עד יחיד דירות](#) (Hebrew)
- [אביב בתל לשכור / להשכיר דירה מחפשים](#) (Hebrew)
- [אביב בתל לאוזן מפה מכירה/להשכרה דירות](#) (Hebrew)
- [Batim LeOlim - Rentals in Tel Aviv](#)

Feel free to ask anybody and everybody. This is actually a very effective way of finding housing, jobs, and information. Personal connections go far in Israel, especially since apartments come and go very quickly in the city. We are happy to help, even if it is just to brainstorm ideas about finding what is right for you.

When looking for an apartment, we highly recommend clarifying the following issues:

### **Apartment Details**

- Where is the apartment located?
- How big is the apartment in square meters?
- On what floor is the apartment? If it is on the ground floor, are there security bars on the windows?
- What appliances are included in the apartment (many apartments do not include major appliances such as an oven, stove, or fridge)?
- What furniture is included?
- Is there air conditioning? Heating?
- What else is included in the apartment?
- Is there a roommate? What are your impressions of him/her?

### **Rent**

- What does your rental payment include (*vaad bayit* - building maintenance fees? all inclusive - water, gas, electricity, maintenance fees, cable Internet, phone, etc.)?
- How often is payment due and in what form (12 checks in advance? 6 checks in advance? 1 lump sum? Cash - never pay cash unless you receive a receipt)?

### **Bills**

- How much is *arnona* (municipality tax) and water every month?
- Is there an electric heater for water (*dood chashmal*) or is it solar powered (*dood shemesh*)?
- How much is electricity, on average, per month?
- How much are the *vaad bayit* maintenance fees each month?

### **Signing the Lease**

- Can the lease be written in English?
  - Is there a need for a guarantor?
  - Do they require a lawyer to review the lease? If so, who covers the cost?

## **The Area**

- Visit the neighborhood during both the day and at night to get a feel for the area. Is it loud at night? Does it feel safe after dark? Is it near a bus route to the university?

For more information regarding the legal aspects of leases, the Student Union offers free legal consulting. To receive this service, please make an appointment to visit their office in the Mitchell Building, room 112. Additional information is available on their website, [click here](#).

# ACADEMICS



# ACADEMIC AFFAIRS

## ACADEMIC INTEGRITY

Plagiarism, in any form, is taken very seriously by the university administration in general and the B.A. in Liberal Arts program in particular. There are strict guidelines regarding the definition of plagiarism and its consequences.

According to TAU regulations, plagiarism is defined as any form of fraud or violation of instructions referring to an exam, take home paper or exam, seminar paper, final paper or any other assignment given to a student within the framework of their studies, including any violation regarding behavior in a written or oral exam.

1. Any work submitted by a student must be the result of their own individual work at any and all stages of its preparation: bibliographic search, use of databases, material and data gathering, material organization, writing and editing.
2. Once a student has submitted work to a professor, the professor may summon him/her to test his/hers knowledge of the materials, thus verifying that the submitted assignment is the result of the student's own work.
3. A student may not submit the same assignment in more than one course.
4. Students are also expected to protect their work from plagiarism by refraining from sharing assignments with other students.

Students must understand that using the work of others without giving credit constitutes plagiarism and must refrain from engaging in any of the following activities:

- Submitting the work of another writer, in part or in whole, as the student's own.
- Using the ideas of another writer without giving credit.
- Taking any number of words from the work of another writer without using quotation marks and citing the source.
- Using material found on the internet, or in published sources, without giving proper credit.
- Submitting work done for another course.
- Submitting group work for an individual assignment.
- Using unauthorized materials during an exam.

***Students must understand that the consequences for violation of these rules will include, at minimum, a failing grade on the assignment without the chance to resubmit; violations may also result in a failing grade for the course and suspension or dismissal from the program and the university.***

## **UNIVERSITY REGULATIONS**

### **Definition of 'student'**

To be considered a student at Tel Aviv University, one needs to have received an offer of admission by the official university registrar, and/or to have been allowed to pursue his/her studies according to university and faculty rules, or the rules of his/her respective department, and to have fulfilled the academic requirements, including course registration and tuition payments. Processing tuition requirements apply also to students who are partially or fully exempt from tuition payments.

### **Remittance of Payment**

Tuition fee for each year must be paid in full by the end of the first semester, unless a deferred payment plan has been coordinated with the Finance Department. Failure to do will result in withholding of academic records or dismissal from the program. Regarding any further payment issues or questions, students can refer to the letter of agreement and find the required and relevant details.

### **Accreditation**

For FFELP purposes, Tel Aviv University is registered with the Department of Education (Title IV Code 008373-00 or electronic G08373). In Israel, Tel Aviv University is accredited by the Department of Education and the Council for Higher Education.

### **Diploma**

The B.A. in Liberal Arts diploma will be titled:

**BA in The Multidisciplinary Program in the Humanities**  
(in Hebrew: **בוגר אוניברסיטה בתכנית הרב תחומית במדעי הרוח**)

# PROGRAM REQUIREMENTS AND REGULATIONS

## Program Structure

The BA in Liberal Arts is designed to be completed as a full degree program.

To graduate, students are required to complete 120 credits.

A full degree is composed of the following:

1. [General Studies module](#) (core curriculum) (24 or 26 credits). A series of introductory courses intended to acquaint students with major academic fields and approaches. Taken during the first year, these courses introduce students to history, philosophy, the social sciences, literature, science and academic writing. (Note that students study either two or four credits of academic writing depending on prior experience.)
2. Elective tracks. Students choose four of the following six tracks:
  - a. [Psychology](#)
  - b. [Middle Eastern Studies](#)
  - c. [Modern Jewish and Israel Studies](#)
  - d. [Digital Culture and Communications](#)
  - e. [Philosophy](#)
  - f. [Literature](#)
  - i. **Major** (36 credits). Students choose one of the four elective tracks to pursue in the greatest depth. In this track the students will also participate in a senior seminar in their final year of studies. Students will declare their major at the end of the first year.
  - ii. **Minor** (24 credits). This track will also involve a senior seminar.
  - iii. **Two basic tracks** (18 credits each, or 18 and 16 credits depending on the number of general studies credits completed).

The program structure is summarized below:

	Credits
General studies	24/26
Major track	36
Minor track	24
Basic track	18
Basic track	18/16
	120

Students who complete the requirements for graduation will receive a Bachelor of Arts degree from Tel Aviv University's Multidisciplinary Program in the Humanities.

Students who complete the requirements for graduation will receive a Bachelor of Arts degree from Tel Aviv University's **Multidisciplinary Program in the Humanities**.

### Exams and Assignments

All courses require ongoing participation and the submission of assignments throughout the course, including final assignments which take place at the end of the term or the school year.

#### Midterms

Midterms are exams that take place during the term of the course at regular class time, and count as part of the academic requirements for the course. Grades will be received within two weeks after the midterm.

#### Final Course Assignments

Final course assignments take place during the exam period of the respective semester/ year during which the course was taken. Final course assignments can be class exams, take-home exams, or final term papers.

Only students who have fulfilled all academic requirements for the course, and have paid their tuition according to program regulations, will be eligible to attend final exams or submit final course assignments.

#### Papers

A paper is any written assignment including term course paper, seminar paper, report or short response. Papers can be assigned during the term or at its end.

Final course papers have a single due date (no makeup date) as set and announced by the professor.

The mode of submission shall be specified by the professor and can be any of the following: e-mail, hard copy placed in the professors' mailbox, or a printed copy handed in person to the professor or submitted directly to the Liberal Arts office.

In special cases, a request for late submission should be coordinated with the relevant professor and the Liberal Arts office in advance (seminar papers excluded).

**Seminar papers** must be printed and submitted to the Liberal Arts office in hard copy.

Due dates for seminar papers are rigid and standardized; students must check the university website to consult the relevant dates. Any late submission of seminar papers should be approved by the faculty's academic committee in advance.

### **Class Exams**

B.A. students may attend a final exam on two dates (*original exam date* and *makeup exam date*) during the year in which they attended the course, at dates set by the university.

Exam rooms are published only on the morning of the exam, at the entrance to the Humanities building (Gilman).

### **Take-Home Exams**

Take-home exams count as final exams for a course and will take place during the respective exam period (they too have *original* and *makeup dates*). The exam will be distributed at the scheduled time and date (please refer to the exam schedule) and must be submitted within 48 hours to the Liberal Arts office (unless stated otherwise by the professor).

### **Makeup Exams**

Makeup exams apply only to class and take-home exams. Papers do not have makeup dates.

A student must attend the makeup exam in any of the following cases:

- a. If the student failed to attend the original exam date, for any reason.\*
- b. If the student received a failing grade in the original exam.

In these cases there is no need to register in advance; the student should simply attend the makeup exam at the designated time and place.

- \* If the student did not attend the original exam and then received a failing grade in the make-up exam, the F remains and he/she is not entitled for a special exam date (except under the terms defined under the 'special exam date' segment – see below).

### **Improving Passing Final Grades**

If a student wishes to improve a passing FINAL grade (say if one scored 75 and think he/she can do better), he/she is entitled to attend the make-up exam date. Note that the later grade (not necessarily the higher one) counts!

To improve a grade, a student must register in advance via the Personal Information page on the student portal <https://www.ims.tau.ac.il/Tal/Default.aspx?> (Hebrew only) AND via email to the Liberal Arts office, stating his/her student ID number and course number, and the request to attend a makeup exam to improve a grade.

\*Please note – this process is relevant ONLY to final class and take-home exams.

### **Final Course Grades**

Grades are posted on the student's "Personal Information" page on MyTAU.

Grades will be received within two weeks of the date the final assignment is due. While checking an assignment, the grader is obligated to write comments as to why s/he took off points from the test or may, alternatively, provide the answers to the test.

The last grade received is the final grade for the course. If a student took a final both on its *original exam date* and the *makeup exam date*, the grade in the *makeup exam* is considered towards the final course grade.

Exam blue books are not returned to students. Students may review their blue books during a scheduled meeting with the professor or teaching assistant.

Final course papers and seminar papers shall be returned directly to the student or left at the Liberal Arts office (where students can pick them up at their convenience). Papers left in the office will be kept until the end of the following semester.

### **Special Exam Dates**

The university sets very clear and strict guidelines about which students are eligible for a special exam date (*mo'ed gime!*) or to receive a special date for the submission of a seminar paper.

**Lecturers are not entitled to authorize such requests under any circumstances.** Students who wish to request a special exam or seminar submission date must submit their request in writing to the program's academic committee, via the Liberal Arts office. The committee, in accordance with university rules, will only approve such requests in rare and extreme cases. If approved, the committee will then coordinate with the lecturer in question a date for the special exam, giving priority to the lecturer's and the program's needs and time schedule. Unless a student is about to complete his/her degree, such exam dates can also be deferred until the next semester.

In general, students who are eligible to apply for a special exam dates are:

- A student who was on reserve army service on the day of the exam or for a period longer than 20 days which ended less than 7 days prior to the exam;
- A student who is on pregnancy watch, has given birth or adopted during the respective semester;
- Any student whose original exam grade was published less than a week prior to the *makeup exam date*;
- A student whose next of kin has passed away (mother/father, brother/sister, husband/wife, child) on the day of the exam or the period of two weeks prior to the exam;
- A student who attended an exam in which the lecturer presence protocol was not followed;
- A student who had two compulsory-course (not elective) final exams within less than 24 hours of one another;
- Any other student who has been determined eligible by the academic committee.

In requesting a paper extension, students must submit their request in writing to the committee (including any supporting material) no later than two weeks before the paper's deadline, unless there are extreme medical or other extenuating circumstances.

### Grading System

At the beginning of every course, students will be informed by the professor regarding the assignments required for the course, and their respective grade percentages.

The following is the grading system used at Tel Aviv University:

95-100% = Excellent

85-94% = Very Good

75-84% = Good

60-64% = Sufficient

65-74% = Satisfactory

59-0% = Failure

Students who fail to complete any of the course requirements during the period of instruction

have an incomplete grade (260) recorded on their transcript. In special cases, a student may complete the course requirements after the semester within a given timeframe. The grade would then be changed accordingly.

### **Special Accommodations – Learning disabilities or special needs**

In order to allow students with learning disabilities an equal chance to succeed in their studies and exams, such students are eligible for special accommodations.

Students with learning disabilities or special needs must bring official documentation from their home country (translated into English by a notary if in another language) to the Liberal Arts office. The office staff will then take care of the process and inform the student of the accommodations they are eligible for at TAU.

Please be sure to contact the office as soon as possible. The process takes a few weeks. In order to arrange all accommodations prior to final exams, official documentation will be accepted only until the third week of each term.

### **Foreign Language**

Students are welcome to study a foreign language from a range offered by the Centre for Language Excellence. Credit is not given for these classes and students may require some knowledge of Hebrew.

Hebrew classes are offered by the university but students will incur an additional fee for these.

### **Course Registration**

At the beginning of each academic year, prior to the beginning of the fall semester, the program head and academic advisor will meet with students individually and build their annual course program, based on the student's chosen tracks. Dates and times of course registration meetings are announced in advance by the office.

In addition, the program head and the Academic Advisor are available to meet with students regarding course selections and degree requirements. Students are encouraged to consult with them at any time.

### **Add/Drop Week**

During the first two weeks of each semester, students will have a chance to add/drop courses in their schedule, by approval of the program head. Dates for making these changes will be announced at the beginning of each semester. Please note that courses taken from the

Overseas Program (TAU International) can only be dropped (and not added) after the start of the semester

### **Attendance**

Attendance in all classes is mandatory. Students who fail to attend a lesson must contact their respective professor and resolve their absence. Missing more than three classes from a course may result in dismissal from the course and/or program.

### **Academic Probation**

Students are expected to complete a minimum of ten credits in each fall and spring semester. Failure to make adequate academic progress will result in academic probation. Failure to improve during the probation period will result in removal from the program.

### **Syllabi**

Students will receive a syllabus from the lecturer of each course for which they are registered. It will specify the reading materials for the course and describe the assignments and requirements, how the grade will be assigned, the form and date that assignments should be submitted, and the availability of the lecturer outside of class.

### **Course Materials**

As a general rule, the Liberal Arts program endeavors to make use of online reading material as much as possible.

All courses have interactive websites on the Moodle system. Most course materials are available to students via the Moodle system and/or the university libraries, yet some courses may require purchasing books (most of them can be purchased online).

### **Assignments**

All courses require ongoing participation and the submission of varied assignments throughout the course, including final assignments which take place at the end of the term or the school year. Any and all assignments required for a course should be specified at the beginning of the term and stated in the course syllabus. All assignments must be submitted in a timely manner, any failure to do so may result in a lower grade, failing the assignment or even course failure.

## Exam Periods

Exam periods constitute the time frame during which final course exams take place. Exam periods start at the end of each semester.

\*Please note, the dates of final course assignments in the English Literature track will be different from the above mentioned dates, since the dates of English Literature courses are scheduled according to the regular university calendar and not the international one.

## Contacting Professors

As much as professors may be friendly, they deserve your respect and deference.

When you wish to discuss any matter with professors you may approach them before/after the lesson, send an email, or schedule a meeting during their office hour.

When emailing professors and setting meetings be clear and polite. If you have scheduled a meeting and cannot attend, make sure to cancel in advance.

## Right to Appeal

Students have the right to appeal the results of a written examination within two weeks from the day the papers are returned to the office. If there has been no appeal during that period, the grade is final. The appeal process will be communicated to you during orientation week. The last grade given will be the determining grade (even if the grade received after the appeal is lower than that given for the exam/paper).

During the appeal period, students may not take their original papers/exams out of the office. They may look at their papers and make a copy if allowed by their program administration.

## Accessibility at Tel Aviv University

Tel Aviv University believes that all of its students and staff should be entitled to equal access to university facilities, resources and activities, regardless of physical, sensory or mental limitations and disabilities. TAU strives to provide a safe and welcoming environment for people with disabilities and makes accessibility a priority in designing and upgrading the TAU campus.

Tel Aviv University has charged the [Dean of Students](#) with ensuring the welfare of students with disabilities. The Dean of Students' office currently provides support and academic assistance to students with disabilities through sponsorships, counseling services and technological study aids. For additional information please contact the Executive Assistant to the Director General on Accessibility Issues, Mariela Yabo at [marielay@tauex.tau.ac.il](mailto:marielay@tauex.tau.ac.il).

## Official Transcripts and Diplomas

Students may order official transcripts at any time for a modest fee. For more information, please contact your program coordinator.

Upon successful completion of all courses, an official transcript from Tel Aviv University will be sent to the address you request by mail, several months after graduation.

Eligibility to graduate and/or receive an official transcript is granted only to students who have completed their academic requirements and have finalized tuition and other debts.

## Moodle

Students have access to Moodle, the online course management system used at Tel Aviv University. Users can access course materials and activities, grades, and communicate with lecturers and other students in the program. Login information and a tutorial will be provided to students during orientation week.

## English

The intensive English summer program is intended for students who would like to improve their English language skills before beginning their undergraduate or graduate studies at Tel Aviv University or elsewhere. Students should have high intermediate to advanced level proficiency in English (if demand is sufficient, courses will be offered at lower proficiency levels as well). The program focuses on reading, writing, listening, and speaking skills in academic contexts. Topics covered include building academic vocabulary, reading more efficiently, writing academic papers, listening to lectures and note-taking, participating in seminar discussions, and delivering oral presentations. Students will also receive guidance in library and research skills. The courses are taught by qualified and experienced teachers who specialize in teaching English for academic purposes. The courses are taught in small classes.

During the summer, two courses are offered:

1. Academic English - Reading and Writing
2. Academic English - Listening and Speaking

Students may register for either or both courses.

## Hebrew and Arabic Language Classes during the Academic Year

Hebrew and Arabic classes are offered especially for international students and will be offered during the year for an additional fee. Registration for Hebrew and Arabic courses takes place during orientation week at TAU International offices.

## The Division of Foreign Languages at Tel Aviv University

**Foreign Language Courses:** The Division of Foreign Languages offers courses in a wide range of languages. These full year (two-semester) courses are offered on two levels, beginners and advanced, both consisting of 4 class hours a week for the entire academic year. The Division of Foreign Languages also offers intensive one-year courses in French, German and Spanish.

## TAU Writing Centre – Division of Foreign Languages

TAU's Writing Center in the Division of Foreign Languages gives students the opportunity to improve their academic writing skills in English at any stage of their studies and writing. The division offers individualized sessions with professional, experienced tutors in a supportive peer-based environment. During these sessions, tutors will address personal and academic writing strengths and challenges, empowering students to improve academic performance at all levels.

The division is made of experienced and dedicated TAU faculty members and graduate students in the field of teaching English as a foreign language. All are involved in teaching and researching academic writing from the undergraduate to the doctoral level. As such, teachers provide several types of tutoring, support, guidance and feedback, in groups or private lessons.

For more information, please visit our [website](#) or [Facebook page](#).

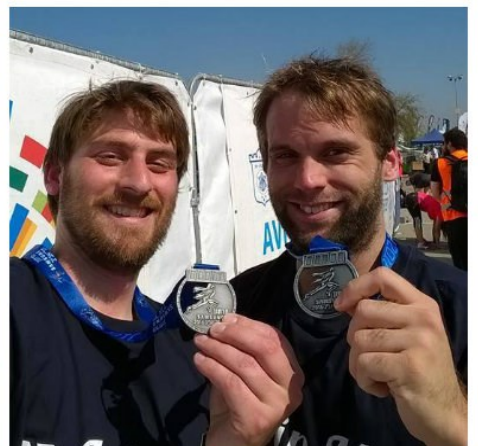
Feel free to contact us at: [cle@tauex.tau.ac.il](mailto:cle@tauex.tau.ac.il)

## Student Affairs and Contacts

1. Students should contact their professors on all matters related to their course. Professors' office hours and means of communication are provided by them at the beginning of the academic year. All meetings with professors should be scheduled in advance between the student and the relevant professor – either in person or via email.
2. **Program Head** – students who wish to consult with the program head, Prof. Bruce Maddy-Weitzman, can attend his office hours.

3. **Program Director and/or Student Affairs Coordinator** – on administrative matters relating to studies in the program, please do not hesitate to contact the student coordinator and/or program director in the Liberal Arts office. (We work in full cooperation so there is no need to send materials twice).
4. **Academic Advisor** – for general academic issues or for those which your course professor has not resolved, please book an appointment with the academic advisor, Dr. Robin Shochat Bagon.
5. **TAU International Offices** – any matters stated under 'Student Services – TAU International', as well as regarding Student ID cards or medical insurance.
6. **Dean of Students** – any matters stated under 'Student Services – Student Union – Dean's Services'.

# CAMPUS LIFE



## TEL AVIV UNIVERSITY CAMPUS

Situated in the heart of Israel's coastal region, Tel Aviv University resides on a spacious 220 acre campus. Located in suburban Ramat Aviv, just north of the city, the University is minutes away from downtown Tel Aviv. Tel Aviv University's proximity to the cultural and commercial capital of Israel allows students to absorb the best of Israeli society. Please find a map in the section on Handy Information.

## TAU INTERNATIONAL SOCIAL OFFICE



To complement your academic experience, TAU International puts great emphasis on the social component of your TAU experience. This was the basis of the establishment of our social office.

Our social counselors are here to help you with all the non-academic components of your life in Israel: consulting on day to day issues related to your adjustment to Israel, helping with housing, helping you work with the medical insurance (if needed), etc. They're available for you 24/7 for any type of emergency.

Our counselors also conduct a broad social program that includes trips all over Israel (North, South, Jerusalem), parties, cultural events, etc. They will do this while also providing you with the tools to help you to integrate independently into Tel Aviv's vibrant cultural scene.

Also, the social staff is active in volunteering projects. You will get more information about volunteering opportunities during the orientation week.

**Important for you to remember all the way: the counselors are here to help you!**

Email us at: [madrichimosp@mail.tau.ac.il](mailto:madrichimosp@mail.tau.ac.il)

## GREEN CAMPUS AT TAU

In a milestone for environmentalism at TAU, the university was accredited in 2011 as a "green campus" by the Israeli government, in recognition of its efforts to create a more sustainable institution. The accreditation is awarded to Israeli universities that implement programs in three key areas: academic degrees and courses in environmental studies (given by the Porter School

of Environmental Studies), heightened resource efficiency through recycling and reduction of electricity and water use, and community-related projects that strengthen environmental awareness both on and off campus. Among the green innovations at TAU are more energy efficient lighting, the “Nature Campus” educational initiative, stands for the city of Tel Aviv’s new bicycle rental system, and a comprehensive plan for campus bicycle paths.

TAU’s support for sustainable projects on campus is further underscored by the Porter School of Environmental Studies’ new Porter Building. The Porter Building is designed to meet the highest standards of green building- platinum LEED- and will demonstrate innovative environmental technologies.

## LIBRARIES

As a Tel Aviv University student, you will have access to all the university’s general and professional libraries. A tour of the libraries will be organized for you during the orientation week. A complete list of on-campus libraries is available at: <http://www.tau.ac.il/libraries-eng.html>

Students enjoy high quality library services across campus. In addition, the Bender-Moss Social Science Library will be open 24 hours a day during exam periods.

**Please note that it is your responsibility to return library books on time and that you will not be entitled to receive your diploma until all books are returned.**

## THE STUDENT UNION

The Student Union is one of the most active bodies on campus, and offers all its services in both Hebrew and English. Services to students include, but are not limited to, private tutoring, legal support, and extracurricular activities.

The Student Union is located in the Mitchell Building. Please read the section on the Buddy System for more information about the Student Union’s programs or visit [https://international.tau.ac.il/student\\_union](https://international.tau.ac.il/student_union)

## ENGLISH-SPEAKING STUDENT CLUBS

The social staff of TAUi coordinates several clubs run for the students in English such as Soccer/ Running club, etc.

In addition, there are some TAU Clubs run in English:

**Model UN** is an academic simulation of the United Nations that aims to educate participants about current events, selected topics in international relations, diplomacy, and the United Nations agenda. The participants role-play diplomats representing a country or NGO in a simulated committee session of the United Nations, such as the Security Council, or the General Assembly. Participants research a country, take on roles as diplomats, investigate international issues, debate, deliberate, consult, and then develop solutions to world problems. For more information and registration, please contact: [taumunclub@gmail.com](mailto:taumunclub@gmail.com).

**The Ambassadors' Club** is a project of Tel Aviv University International and **Stand With Us**, aiming at establishing a leadership and advocacy program that allows outstanding international and Israeli students from TAU to be trained by experts in an interactive fashion.

Through **eight** sessions, including a field trip, the program provides the students with necessary tools in different disciplines concerning public advocacy and diplomacy.

Throughout the semester, the club uses a two-level approach: on the one hand, offering information regarding the issues, and on the other, developing the skills necessary to best utilize this knowledge.

Please contact Tel Aviv University International for more information.

## ELITE SPORTS CENTER

The Elite Sports Center (<http://www.sports-center.co.il/?CategoryID=1029>) serves as the venue for all regular university physical education courses, as well as competitive intercollegiate and Israeli league activities in a variety of sports. Facilities include an Olympic-size swimming pool, lighted tennis courts, a basketball court, a track, and a soccer stadium. The Goldreich Multipurpose Sports building houses fitness and weight rooms, squash courts, and a gymnastics hall. You may purchase a sports pass entitling you to the use of all sports facilities and activities during your stay in Tel Aviv. Separate passes must be purchased for the use of tennis and squash courts.

For membership, you will need to provide the Sport Center with the medical [form](#) signed by your doctor.

The Tel Aviv University's Elite Sports Center is also host to the [Tel Aviv Pioneers American Football Team](#). The Pioneers are one of three founding members of the Israeli Football League (IFL) (Israel's amateur football league with eleven teams across the country). The Pioneers are the 2008/2009 and 2013/14 league champions and perennial championship contenders. If you are interested in joining the team or just interested in coming to support us, contact us via or [email us](#).

## VOLUNTEER AND INTERNSHIP OPPORTUNITIES

Tel Aviv University believes in encouraging its students to be involved, caring, active citizens who are committed to effecting social change and constantly improving Israeli society.

Students interested in volunteer and internship opportunities should meet with the program coordinator and/or the internship coordinator in the TAU International office in Israel. Internships are not available for credit and are unpaid unless special arrangements have been made.

Some fields of volunteering opportunities are:

- Children and education
- Refugees
- Women
- Nature and animals

## BUDDY SYSTEM

The Buddy System is a project created in collaboration with the Tel Aviv University Student Union especially for international students.

It is a group for students, run by students. The Buddy System's goal is to create a united and multicultural campus at Tel Aviv University.



The program offers all international students the opportunity to enhance their connection to the city, country, and community by connecting them with Israeli students at events held throughout the academic year.



The Buddy System provides the opportunity to meet and build real friendships with Israeli students. The experience is enhanced by Buddy System activities such as trips, lectures, volunteering, parties, and more.

The project is led by four student volunteers and a team of passionate students who want to meet you and make your TAU experience unforgettable.

For more information and photos from previous events, see the Facebook page, TAU Buddy System, at: <https://www.facebook.com/TAUBuddySystem> or email them at: [people@taubuddysystem.com](mailto:people@taubuddysystem.com)

Additional information will be provided during orientation week.

## TAU LGBTQ GROUP

TAU LGBTQ group is happy to welcome you to campus!

Our group is a Loving home to all gay, lesbian, bi, trans, queers and confused friends.

We meet every other week for different activities that concern our life on campus and in Israel, followed by our local bar for some drinks and hanging out.

Most of the weekly meetings are in Hebrew, with all other activities conducted in English and Hebrew.

You can [sign up for our mailing list here](#) (Hebrew) in order to stay up to date, and you can always call or look for us on Facebook!

## RELIGIOUS HOLIDAYS

It's Tel Aviv University policy to respect all religious beliefs. No student will be penalized for absence due to religious observance, and alternative arrangements will be sought to meet the academic requirements. Please consult your program's coordinator regarding any questions or issues you might have. For national and religious observance holidays, please refer to our academic calendar.

Please see section on Life in Israel for explanations about the major holidays celebrated in Israel.

## CRISIS HOTLINE

In the event that discrimination, harassment, or other conflicts arise, please contact the TAU International office located in the Carter Building on campus. In addition, a student services hotline has been established to handle psychological counseling and crisis. This hotline runs from 6:00pm to 10:00pm nightly. **Phone: 03-6405352**

## PSYCHOLOGICAL SERVICES

Psychological services in English are available for international students. To make an appointment, please contact Ms. Lena Arbiv, secretary of the university's psychological services, 03-6408505 or [clinic@post.tau.ac.il](mailto:clinic@post.tau.ac.il). Their offices are located in the Mitchell Building, room 216. Psychological services are strictly confidential by law. Office hours are Sundays-Thursdays from 8:30am to 2:30pm.

The fees for psychological consultation and counseling are as follows:

Initial consultation session	200 shekels
Second and further psychotherapy sessions	200 shekels
First psychiatric consultation	275 shekels
Further psychiatric consultations	200 shekels

\*Students can receive continued psychiatric consultation, but only concurrently with psychotherapy.

Confidentiality and privacy: The content of psychological and psychiatric appointments is absolutely confidential. No information whatsoever regarding students is divulged to any university officials, nor to any other institution or party. Only if the student signs a waiver authorizing release of information can any information be divulged.

## HEALTH INSURANCE

Your welfare is of paramount concern to us. The university provides insurance that is included in the cost of tuition. **University Health Insurance is non-refundable and is mandatory for all TAU International students.**

If you are an Israeli citizen with an active health insurance account, please contact your program coordinator as soon as possible.

Tel Aviv University has chosen the Harel Health Insurance Company, the leading health insurance company in Israel. The policy is a basic health insurance plan that covers treatment by a large selection of private English-speaking doctors. It also covers hospitalization in public hospitals. Coverage includes all program and vacation days. This insurance provides coverage for the student only within Israel.

Please note that the **insurance is valid until July 31<sup>st</sup>, 2020**. If you wish to extend the insurance beyond that period, please contact:

Diana Petlitski ([dianape@tauex.tau.ac.il](mailto:dianape@tauex.tau.ac.il))

**The extension period is at the student's expense and those who wish to extend may choose another company instead**

In order to get prescription medication and/or subscribe to a gym, please bring the [Medical Form](#), signed by a physician.

Please make sure to always carry your card.

- Call \*2700 for the Clalit Call Center - 24/7.
- For a home visit (house call) by a doctor, call 1800260660 03-6272356 or \*6101 and a doctor will arrive within 3 hours.
- For the full list of Clalit clinics, please go to: [www.clalit-global.co.il/en](http://www.clalit-global.co.il/en).
- TAU's Clalit Clinic (adjacent to the central library) is open Sundays through Thursdays 8:00am-4:00pm. Phone #: 03-6415818
- Also close to TAU: Brodetzky Clinic. 19 Brodetzky St. Phone: 03-7456500
- For general information about the insurance company or policy: 1-800-414-422

## COVERAGE IN ISRAEL

1. The insurance company will provide students with professional and efficient health services which include:
  - a. Comprehensive medical providers network covering all of Israel. This includes physicians, practitioners and specialists, pharmacies, laboratories, and X-ray facilities.
  - b. 24-hour assistance center for immediate treatment and referral.
  - c. Services provided within close proximity to the university (Ramat Aviv and North Tel Aviv).
  - d. House calls when the student is unable to visit a physician.
  - e. Hospitalization in any hospital within the State of Israel.
  - f. Refund for ambulance transportation in cases of emergency.
  - g. Administration of injections, excluding daily injections (such as insulin). Medicine must be provided by the student.
2. Every student receives a personal medical service ID card. Upon presenting the card, the student is eligible to receive all services. at no charge. Medicines, laboratory tests, or X-rays prescribed by the physician are provided or administered by network providers at no charge.

3. Students may visit any participating general practitioner or specialist listed in the index without referral.
4. Coverage includes emergency dental treatment.
5. The 24-Hour Assistance Center can be contacted regarding any medical problem that arises outside of business hours, or that does not have a solution within the framework of the network.
6. Referral for hospitalization may be made by any participating physician or the 24-Hour Assistance Center. In emergencies, the student may go to the nearest hospital without prior notice to the Insurance provider. The Insurance provider should be advised as soon as possible after admittance so that the case can be monitored by the insurance company.
7. Students may use the network anywhere within the State of Israel. The 24-hour Assistance Center will provide referrals to the nearest physician.
8. Exclusions and limitations:
  - a. Pre-existing conditions to the commencement date of the insurance.
  - b. Any medicine or treatment not prescribed by the insurance company's physicians.
  - c. Psychiatric treatment.
  - d. Treatments related to HIV/AIDS.
  - e. Aesthetic treatments and/or plastic surgeries.
  - f. Pregnancy and delivery.
  - g. Work - related accidents.
  - h. Dental treatment that is not considered an emergency designed to relieve immediate pain.
  - i. Injuries incurred while intoxicated or under the influence of illegal substances.
  - j. Injuries incurred while participating in extreme sport activities (e.g. bungee jumping, mountain climbing, etc.).
  - k. Traffic accidents are not covered by the medical insurance provider. In such cases, coverage is through the responsible party's insurance or through a government fund, Karnit.
9. For additional information, please refer to the [insurance policy document](#) supplied by the program.

## PERSONAL HEALTH INSURANCE

TAU suggests that students consider carrying private comprehensive health insurance. In the event that a medical need arises that is excluded by the policy - such as a pre-existing condition or prescriptions - your insurance may enable you to recover those costs. Please make sure that you have insurance coverage that is effective throughout Israel if you plan on being in the country before the program begins. If you plan on traveling abroad either during or after the program, please ensure that you have insurance coverage that is effective throughout the Middle East, or anywhere else you intend to travel.

## HEALTH TIPS

As when visiting any foreign country, there are often some adjustments your body will need to make to the new environment. Newcomers to Israel may suffer from an initial sensitivity to tap water, and at the same time should also be acutely aware of the high risk of dehydration, especially during the summer months. Bottled water is recommended for those with sensitive stomachs, especially at the beginning of their stay in Israel.

The sun in Israel is extremely strong, much stronger than in many temperate-climate countries. If you plan on being outside for even 20 minutes, you should wear some form of sun protection. If you plan on being at the beach all day, you will need to reapply sunscreen regularly. You may want to bring a sufficient supply of your favorite sunscreen, as it may not be available in Israel or may be significantly more expensive. Wearing a hat when out in the sun is highly recommended.

If you are taking prescription medication, you should bring a supply to last the entire time you are in Israel. It is also recommended that you bring a typewritten, generic prescription for your medication, should you need to have it refilled. Since not all medicines in Israel are available under the same brand names as in your country, it is essential that a generic name be provided for reference by a local doctor or pharmacist. In the event that you are sent an additional supply of medication by mail, you may be required to present a prescription to the Israeli Customs Office before the medication will be released. Finally, please keep in mind that while many drugs may be purchased over the counter in your home country, they may not be available as such in Israel.

## FOOD AND LIVING EXPENSES

Tel Aviv is a relatively expensive city, but it is also possible to economize. Plan to spend up to 1,200 USD per month for food, independent travel, and incidental expenses. Allow about twice as much for the first month to cover initial purchases. Of course, the amount spent varies per person.

There is no inclusive meal plan at Tel Aviv University. There are several supermarkets nearby, as well as shops that sell prepared foods. University subsidized cafeterias on campus serve excellent kosher meals at very reasonable prices. There are plenty of restaurants and cafés in close proximity to the campus.

Some of the larger grocery store chains in Israel are Supersol (also known as Shufersal), Mega, and Tiv Ta'am. Supersol and Mega are closed on the Sabbath (Saturdays), and everything in the stores is kosher. Tiv Ta'am, on the other hand, sells non-kosher products and is open on Saturdays.

Also open on Saturdays is AM:PM, which is a grocery chain that sells fresh produce and most staple groceries. As the name suggests, AM:PM is also open all night long.

The two main health food chains are Teva Kastel (many locations throughout the city) and Eden (in Gan Ha'ir shopping center - Ibn Gvirol Street at the corner of Hadassah Street). Many international products are also available at these stores. If you are looking for marmite, sushi rice, curry, or root beer, this store is for you!

Another great way to shop is by visiting the outdoor markets. Carmel Market, located at the intersection of King George, Allenby, and Sheinkin Streets, is a great place to get anything you might ever need. Beyond food, the market also has shops that sell flowers, hardware, clothes, and many other items.

There are many free cultural events and the beach is free, but concerts, designer shops, and eating out can add up. The costs of living will therefore very much depend on you. We suggest that you consider adopting the eating habits of Israelis - fruit and vegetables are relatively inexpensive and readily available. Chicken is the most popular meat, as beef is costly and features less prominently in the Israeli diet.

Students can purchase discounted vouchers for purchasing food in supermarkets from the Student Union.

## ON CAMPUS FOOD

In each building there is a nice Cafeteria - go and explore your culinary choices! All campus cafeterias are kosher.

## POST OFFICE

There is a post office located just outside the main gate of the University on Levanon Street, across from the main entrance to the University. There are many services and products offered, including postage stamps, phone cards, fax services, money exchange (with better rates than at the bank), and money orders via Western Union. You can even buy a credit card and pay most of your bills there. For more information about Israel's Postal Services go to: <http://www.israelpost.co.il/>

You should allow at least ten days for a letter mailed from Tel Aviv via standard airmail to be delivered in New York. Mind this gap in time when you send a letter home and vice versa. For reduced delivery time, mail may be sent by Special Delivery Airmail from the United States or by Express Mail from Israel at an additional charge. Packages may be sent by air or surface mail, the latter taking up to several months for delivery. Packages sent by mail may be subject to duty charges.

For students living in the dormitories, mail that is sent to the university is delivered to a central mailbox outside the Tel Aviv University International Office. You must check this box daily for your mail and messages. Mail should be addressed to:

**Your Name**  
**c/o Tel Aviv University International**  
**Tel Aviv University**  
**Carter Building, Room 108**  
**Ramat Aviv, Tel Aviv 69978**  
**ISRAEL**

## Time Zone

Israel's time zone is UTC + 2. Israel follows Daylight Saving Time, but has a slightly different changeover schedule than Europe and North America. For the exact time in Israel click:

[http://www.worldtimeserver.com/current\\_time\\_in%20%20%20IL.aspx](http://www.worldtimeserver.com/current_time_in%20%20%20IL.aspx).

Israel is seven hours ahead of Eastern Standard Time (for example, when it is 4:00 a.m. in New York, it is 11:00 a.m. in Tel Aviv). Keep in mind that Israel follows a slightly different changeover schedule for daylight savings time.

## TELEPHONE SERVICES

In Israel, there are several service providers for mobile phones, such as: Cellcom, Orange, Pelephone, Hot Mobile, Golan Telecom, etc. This is a very competitive market and it is recommended to check several companies for service plans. Please note that Israeli law forbids signing long-term commitments with communication service providers. Tel Aviv University has arranged for all international students to receive a rent-free cell phone through IsraelPhones. We **strongly recommend** that all students carry these phones for their convenience and safety. To sign up for your phone or for a complete list of benefits, go to <http://www.israelphones.com/tau.htm>.

Please note that you will be charged a **fully refundable \$175 deposit** to ensure that your mobile phone is returned. For a complete list of benefits for both students and parents, please refer to the above webpage. The phones will be distributed during orientation.

Note: Please give your phone number to your program administration.

## INTERNATIONAL CALLS

Since the international telecommunications market in Israel was opened to competition, rates on international calls dialed directly from Israel are often cheaper than from the opposite direction. To make an overseas call, dial one of the following 3-digit codes before your country code and area code: 012 (Smile), 013 (Netvision-Barak), or 014 (Bezeq International). If you are coming to Israel from the United States or Canada, you may want to purchase Vonage or MagicJack to make long-distance calls. In addition, using Skype or Google Voice from a computer is always an option.

## INTERNET ACCESS

All international students will receive an email account from Tel Aviv University. In addition to several conveniently located computer labs, most areas on campus offer wireless Internet access.

All the computers used at Tel Aviv University are PC compatible. If you decide to bring your own laptop computer, please make sure that it is compatible to 220 volts.

You can log on to the following WIFI networks while on campus:

Free-TAU      Password: free-tau

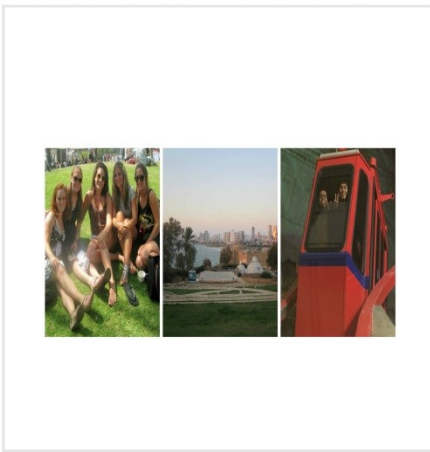
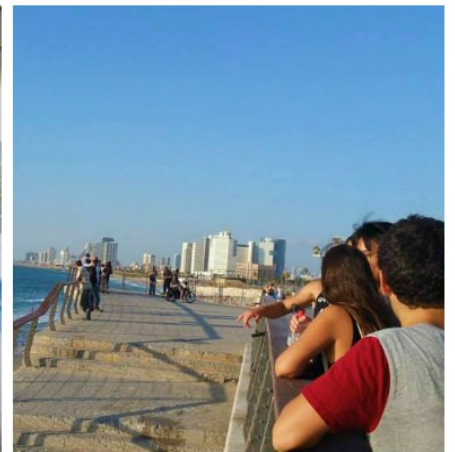
Public-TAU    Password: publictau

## SCHOOL AND OFFICE SUPPLIES

**For Office supplies, books, Stationery items, etc.**, go to “Bug”, On the corner of Chaim Lebanon and Einstein St., near TAU main gate and behind Hahug Hatzfoni bar. 037292345, Sun-Thurs: 8:30am-8:00pm, Fri: 8:30am-2:00pm

An office supplies store is conveniently located at the main entrance of Tel Aviv University and sells most of the necessary supplies you will need for your academic studies. You will find everything from pens and notebooks, to printers and USB memory sticks/flash drives. Students with a photo student ID receive a discount. In addition there is also a store located in the Ramat Aviv Mall as well as stores all over Tel Aviv.

# LIFE IN TEL AVIV



## ABOUT TEL AVIV-YAFO

Greater Tel Aviv-Yafo is a world-class academic hub and a popular destination for international students. Four universities and a dozen colleges offer a wide range of programs - from short semesters to full degrees, all taught in English. Together with top academic programs, Tel-Aviv-Yafo offers young people a dynamic student life. Lonely Planet ranked Tel-Aviv-Yafo as number 3 in the hottest destinations for 2011, thanks to its bustling nightlife, lively art scene, and 14-kilometer beach. One out of three residents in the city is between the ages of 18 and 35, making it a perfect location to study!

Tel Aviv was established in 1909, by a group of Jewish families from Jaffa, a port city which has been inhabited for over seven thousand years. Tel Aviv originally began where Jaffa ended, however in 1950 the two cities were united into a single municipal entity. Tel Aviv-Jaffa is now Israel's cultural as well as financial center, a mix of antiquity and innovation, and the center of Israel's high-tech industry and youth culture.

Tel Aviv is the center of Israeli industry and commerce. Israel's only stock exchange as well as nearly 40% of the country's finance and banking industry is located in Tel Aviv.

High-tech is Israel's number one industry and has been the engine of Israel's rapid economic development over the last decades, even in the face of a global economic crisis. Israel has the largest number of startup firms per capita of any country and the second largest concentration of high-tech companies (after Silicon Valley). As a city that encourages innovation and creativity, Tel Aviv is the heart Israel's high-tech and information-based industries, home to most of the country's startup companies.

In 2010 and 2011 Lonely Planet magazine ranked Tel Aviv third on its list of Top Ten Cities to Visit, calling it "a truly diverse 21st-century Mediterranean hub" and "by far the most international city in Israel." In 2012 MasterCard reported Tel Aviv was the fifth most visited destination in all of Africa and the Middle East. Thanks to its 14-kilometer-long beach strip, in 2010 National Geographic magazine included Tel Aviv on its list of "World's 10 Best Beach Cities," along with Barcelona and Rio de Janeiro.

Unique in its status as a major center of industry as well as a hub of youth culture, Tel Aviv is located on the Mediterranean coast and enjoys, on average, 318 sunny days a year. The city's public beaches are meticulously maintained and are open to visitors year-round, encouraging

everything from laid back sunbathing on the sand to sporting activities such as wind surfing – a sport in which Israel won its first Olympic gold medal in 2004.

Tel Aviv has the largest concentration of nightclubs and restaurants in Israel, despite being the country's second most populous city. Nightlife thrives in Tel Aviv due to the city's high percentage of residents between the ages of 18 and 34. Some are students at Tel Aviv University, some are young entrepreneurs, many are artists come to experience Israel's most vibrant city.

- City of Tel Aviv: <https://www.tel-aviv.gov.il/en/Pages/HomePage.aspx>
- Ministry of Tourism: [http://www.tourism.gov.il/Tourism\\_Eng](http://www.tourism.gov.il/Tourism_Eng)

## SUSTAINABILITY IN TEL AVIV

From local organic community gardens to large organizations fighting for national laws on environmental issues, Tel Aviv is the heart and mind of environmental initiatives in Israel and houses the offices of most of Israel's numerous environmental NGOs (non-governmental organizations). Together with the increasingly influential work of these NGOs, a new generation of environmentally conscious Israelis is growing and developing.

## DID YOU KNOW?

Tel Aviv, "The White City", is a UNESCO World Heritage Site.

Tel Aviv is home to over 5,000 Bauhaus buildings - the largest concentration per city in the world. In recent years, the city has been undergoing a massive reconstruction and preservation effort, which has earned it the status of a world heritage site by UNESCO. Take a tour of the buildings at the Bauhaus Center: <http://www.bauhaus-center.com/>

## TRANSPORTATION

It is very easy to travel within Tel Aviv by bus, foot, or bicycle, depending on the distance. For example, the ride from the city center to the university is 30 minutes by bus, even though the distance is just a few kilometers. If you live in Ramat Aviv, you can walk to the university. If you live in the city center, it is possible to walk to the beach and ride a bike to almost anywhere in

the city. Buying and maintaining a car is very costly, and parking is a very time consuming and expensive endeavor. If you plan to go out at night, your best bet is to take a taxi.

General information on buses: [www.bus.co.il/en](http://www.bus.co.il/en), Tel. 1-900-72-1111

Please note that most public transport in Israel stops on Shabbat; though intercity sherut taxis do continue to operate.

'Rav-Kav' is a rechargeable electronic bus and train card at reduced student prices. Please check which 'Rav-Kav' student profile suits you best. 'Studan' is a semester/year program that can be worthwhile if you use it daily. You can also get a regular Rav Kav with 30% student discount.

To receive the Rav Kav card, please bring your student ID and an approval letter from TAU (available from the TAU International office), to the Arlozorov Bus Station or the Central Bus Station (7th floor), Sundays through Thursdays from 8am to 6pm, Fridays 8am to 1pm. During the first week of the semester, you can get it at the Student Union tent on Campus. Please note that you cannot buy a bus ticket on the bus.

## BUSES

- Dan Buses: Tel: 03-6394444 [www.dan.co.il/english/](http://www.dan.co.il/english/) -  
Sun-Thurs: 5:30am-midnight, Fri: 6:00am-3:00pm

Sat: End of Shabbat-midnight.

- Egged Buses: 03-6948888 (Dial 3) [www.egged.co.il/eng](http://www.egged.co.il/eng)  
Sun: 6:30am-11:00pm, Mon-Thurs: 7:00am-11:00pm

Fri: 8:00am-3:00pm, Sat: End of Shabbat-midnight

- Night buses (Kavei Layla) are available on Thurs and Sat night. For more information please dial "Call Kav" hotline at \*8787. <http://www.kav-layla.co.il/> (Hebrew)

For bus times/routes use Google maps or Movelt app.

**TRAINS:** Israel Trains: 03-5774000 or \*5770, [www.rail.co.il/en](http://www.rail.co.il/en)  
Sun-Thurs: 6:00am-11:00pm, Fri: 6:00am-3:00pm

Sat: End of Shabbat –11pm

The train station is about 20 min walk from the dorms.

**SHERUT:** Between a taxi and a small bus, costs is the same as a bus (6-10 NIS per ride).

Goes to Tel Aviv and to the beach:

Sherut number: 4א' (which means - Four Aleph)

## **TAXIS**

MAKE SURE YOU KNOW:

- “Gett” App - Allows to both order a taxi easily by pressing a button, and to pay with your credit card by inserting its details and information. Possibly the best way to order taxis in Israel. Can also be used in English.
- Your driver has to put on the meter. We call it “MONEH”.
- A taxi for the university to the city center should cost NIS 40-60, not more!
- A ride out of the city ( between cities) has a fixed price. Ask the driver to show you the printed price list.
- There is a day rate and a night rate and a rate for Saturday (the night rate is more expensive 9pm-5:30am & all of Saturday).

There are many taxi operators in Tel Aviv, the closest one is a cab station in front of the Ramat Aviv mall.

Kastel taxi's:	03-6993322/	*3242
Palatin taxi's:	03-6214621	
	03-5171444	

## **CYCLING**

Cycling is a very popular mode of transportation among local residents, with designated bike lanes along major roads. The Tel Aviv-Yafo Municipality has a project called Tel-O-Fun, which includes a number of bike rental stations located throughout the city, similar to programs in major cities in North America and in Europe. For more information, visit <https://www.tel-o-fun.co.il/en/>.

There is also a dockless bicycle rental scheme operated by Mobike: <https://www.mobike-israel.co.il/>

## DRIVING IN ISRAEL

Students holding a valid foreign driver's license should be able to rent and drive cars in Israel. Many rental companies are located on HaYarkon Street, near Frishman Street.

Students may also consider signing up for a car sharing service such as [Car to Go](#). Tell them you're a student at TAU - they may give you a discount.

## BANKING

We advise our students to avoid traveling to Israel with large sums of money, but you may want to have a small amount of cash for your first days. Do not open a bank account in a U.S. branch of an Israeli bank since Israeli branches do not have information about accounts opened abroad.

**Opening an Israeli bank account:** The main banks in Israel are Leumi, Hapoalim, and Discount (all have branches conveniently close to campus). Some international students choose to open an Israeli bank account. Certain services, such as depositing checks, can only be done at the same branch at which you opened your account, but withdrawing money from an ATM can be done from any bank. American citizens must report their Israeli bank account in their annual income tax filing, regardless of its duration and total sum.

*If you do not have Israeli ID, the bank clerk, when opening an account, will randomly assign you a fictional ID number. Please make sure you write down this number. You will need it for future services provided by the bank.*

### **Mandatory to have while going to open a bank account**

- TAU Student I.D
- A study approval ( a formal form that states your studying in the university this year, the same one used for the Rav Kav)
- Passport
- I.D from your home country which has a photo in it (in addition to your passport).

### **The bank branches below around campus open bank accounts for foreign citizens**

\*You can open an account in other branches also, these are near campus.

- ["Discount" bank branch on Yehuda Ha-Nasi st. 34](#)
- ["Leumi" bank branch on Brodetzki st. 43](#)
- ["Leumi" bank branch on Aba Akhi Me'ir st. 15](#)
- ["Leumi" bank branch on Rav Ashi st. 18](#)

**ATM cards:** The easiest way to have immediate access to your money from your account in the United States is with an ATM card. We strongly suggest that you arrange for an ATM card from your local bank along with a 4-digit pin number (personal identification number), and that you make sure it can be used in Israel. Please be aware that you will not be able to use a debit card that does not have a credit card logo. Therefore, you should make sure that your bank card is both a debit card and a credit card even if you will not use it as such. We do not advise relying exclusively on ATMs as your only source of cash, due to potentially high transaction fees per each withdrawal.

**Credit cards:** The most popular credit card in Israel is Visa. MasterCard and American Express are also widely accepted. Most businesses accept these cards for goods and services, and banks offer cash advances. Transactions are then billed to an account back home.

## **SPORTS AND RECREATION**

Please see the Elite Sports Center on Campus life section.

## **PUBLIC SPORTS FACILITIES**

Park Hayarkon, Tel Aviv's largest public park, is within walking distance of the University. Features include extensive picnic areas, gardens, a man-made lake, a bicycle path along the Yarkon River, boats for hire, a small children's zoo, and more.

In order to reach the park, walk towards the University Railway Station on the campus's southeastern side. Cross Rokach Boulevard, then turn left, and enter the grounds beyond the parking lot. In the park you will find the Sportek.

Sportek, the Park HaYarkon Sports Center, tel. 03-6422828, 03-6990307.

## BEACHES

Tel Aviv has excellent public beaches with changing rooms, restrooms, and cafes right on the sand. Beach chairs and parasols are available for a small fee. For more information, including directions, please visit the following links (according to your area):

[North beaches](#)

[South beaches](#)

## SHOPPING CENTERS

The closest shopping center to the campus is the Ramat Aviv Mall, which is a five-minute walk from the University's main gate, at 40 Einstein Street, tel. 03-6426612. The mall has two large supermarkets and two levels of shops, restaurants, cafes, and cinemas.

Other options in Tel Aviv are:

- Dizengoff Center, 50 Dizengoff Street, tel. 03-6212416.
- Azrieli Center, off the Ayalon Freeway, tel. 03-6081400.
- Opera Tower, right on the sea at 1 Allenby Street., tel. 03-5107496.
- Gan Ha'ir, designer boutiques, 71 Ibn Gvirol Street, tel. 03-5279111.

Tel Aviv has a number of colorful and lively bazaars, or open-air markets, which are open from early morning to early evening, Sundays through Fridays. While it is less customary to bargain on food prices, it is acceptable to try for a discount on clothes and housewares. The word in Hebrew for bazaar, or open-air market, is *shuk*.

- Shuk Hacarmel - The largest and best market for fresh fruit and vegetables, cheese, meat, Asian and other specialty foods, cleaning supplies, inexpensive clothes, and every other consumer item under the sun. Begins at the corner of Allenby and King George Streets.
- Nahalat Binyamin - An arts and crafts market held every Tuesday and Friday with live music and entertainment. On the Nahalat Binyamin pedestrian-only street, right off Allenby Street and parallel to Shuk Hacarmel.
- Shuk Bezalel - Discount clothes. Off King George St., very close to the corner of Allenby Street.

- Levinsky Street - A wonderful street market for spices, nuts, dried fruit, etc.
- Flea Market (*Shuk Hapishpeshim*) - Second-hand clothes, furniture, and general household items. In Jaffa.

## RELIGIOUS LIFE IN TEL AVIV

- Tel Aviv University is host to a diversity of students from various ethnic and religious backgrounds. It is the university policy to respect all religious beliefs – no student will be penalized for absence due to religious observance, and alternative arrangements will be sought to satisfy the academic requirements involved. Please consult your program's coordinator regarding any questions or issues you might have.
- For the dates of national and Jewish religious holidays, please refer to our academic calendar. On the section on Life in Israel you can find explanations about the major holidays celebrated in Israel.
- **Hillel:** the Foundation for Jewish Life on Campus, is a student-run organization that provides a variety of programming on college campuses around the world. Throughout the school year, TAU Hillel offers events in English and Hebrew that are open to all regardless of religion or nationality. For more information regarding Hillel, go to [their website](#).

Below is a list of places of worship in Tel Aviv-Yafo, please contact them directly for times of worship.

### **Judaism:**

- Conservative/Masorti- Kehilat Sinai, Tel Aviv, <http://taliaharris.wix.com/sinai>. The New Kehila, Ramat Aviv, <https://www.facebook.com/HaKehila>
- Orthodox- [http://www.rabanut.co.il/show\\_item.asp?levelId=60315](http://www.rabanut.co.il/show_item.asp?levelId=60315) (Hebrew only)
- Progressive/Reform- Beit Daniel, Tel Aviv, <http://www.beit-daniel.org.il/>

### **Christianity:**

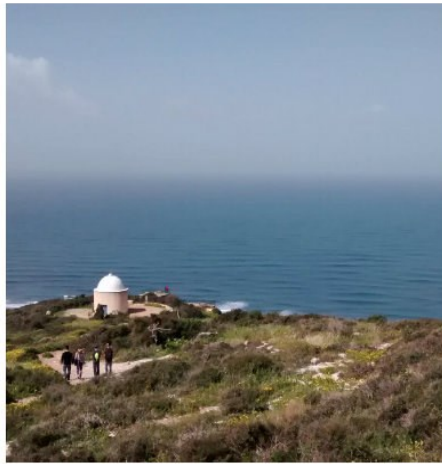
- Lutheran- Immanuel Church, Jaffa (English services)  
<http://www.immanuelchurch-jaffa.com/>

- Roman Catholic- St. Peter Church, Jaffa (English, Italian, Spanish, Polish, and German services). St. Anthony of Padua Church, Jaffa (English and Arabic services) <http://www.jaffatsparish.com/services.htm>
- Greek Orthodox- St. Michael Church, Jaffa (Greek services), Phone: 03-6823451

**Islam (Sunni):**

Al-Ajami Mosque, Jaffa; Mahmoudiya Mosque (Great Mosque), Jaffa; Al Bahr Mosque, Jaffa; Hassan Bek Mosque, Tel Aviv.

# LIFE IN ISRAEL



## JEWISH AND NATIONAL HOLIDAYS

All holidays in Israel begin at sundown on the previous day and their precise dates on the Gregorian calendar change from year to year. The High Holidays (Rosh Hashanah and Yom Kippur) will take place in mid to late September. Sukkot follows in the beginning of October. Other main Jewish holidays include Hanukkah, Purim, Passover, and Shavuot. There are also a number of national civil holidays celebrated in Israel including Holocaust Memorial Day, Memorial Day for Fallen Soldiers and Victims of Terror, and Independence Day. More details about these special days are provided below. Both Hillel and the Buddy System provide holiday-related programming throughout the academic year, and international students will be notified of all.

**Rosh Hashanah** - The holiday represents the beginning of the Jewish year and civil calendar; its name in Hebrew means “The Head (beginning) of the Year.” The holiday is a time when people look back at the occurrences of the past year and think about how they plan to make changes in the upcoming year. Families gather to share a large festive holiday meal.

**Yom Kippur** - The most solemn day of the Jewish calendar, Yom Kippur occurs 10 days after Rosh Hashanah. This “Day of Atonement” is a fast day, and is usually observed by attending synagogue to repent and ask forgiveness. It is said that on Rosh Hashanah, God writes the judgment of every person in the “Book of Life” and on Yom Kippur, the book is signed and sealed. Thus, the ten days between the two holidays is a time to ask forgiveness from others. Please note that most of the country literally closes down during Yom Kippur, including transportation.

**Sukkot** - Translated as “The Feast of the Booths” and also called the “Feast of the Tabernacles”, Sukkot is both a religious and agricultural holiday. The holiday commemorates the forty years that the people of Israel wandered the desert after the exodus from Egypt. The holiday is also a celebration of the harvest season in the region. During the holiday, families erect booths (*sukkot*) outside their homes, in which they sit to eat their meals and even sleep at night. In order for a booth to be 'kosher', its occupants must be able to see stars through the roof of the structure.

**Hanukkah** - Known as “The Festival of Lights,” Hanukkah tells the story of assimilation, suppression, and the fight to maintain the Jewish faith in the face of secularizing Hellenism.

During the holiday Jewish people light an eight-pronged candelabrum to symbolize the eight days that the oil burned in the Temple after it was reclaimed from the Hellenists. The connection with oil extends also to the food that is customary to eat during the holiday - jelly-filled donuts and *latkes* (potato pancakes).

**Tu B'Shvat** - The "New Year for the Trees" is celebrated by planting trees in Israel and eating different kinds of fruit and nuts. The holiday is another agricultural holiday that has its roots in the "Mishnah" (rabbinical commentary on Jewish law).

**Purim** - Purim commemorates the time in which Jewish people living in Persia were saved from extermination at the hands of Haman, the king's advisor. On this holiday, the Scroll of Esther is read twice, small gift packages of goodies are sent to friends, money is given to charity, and people dress up in costume and celebrate.

**Passover** - Commemorating the exodus from Egypt, this holiday is observed in a number of ways. During the first night, the story of the flight from Egypt is recited around the dinner table. Throughout the weeklong holiday, there is a very rigid dietary requirement of not eating bread or any other leavened food. In fact, Israeli law prohibits the sale of these items during Passover, so you may choose to stock up in advance.

**Holocaust Memorial Day** - Starting at sundown, TV broadcasts and radio programs are dedicated to the subject of the *Shoah* (Holocaust). A two-minute air siren goes off at 10:00 the following morning. During the siren people drop whatever they are doing in order to stand in silence and contemplation. Memorial ceremonies are held at the University and main city squares (Rabin Square in Tel Aviv).

**Memorial Day for Fallen Soldiers and Victims of Terrorism** - One week after Holocaust Memorial Day, Israel commemorates its soldiers who have fallen in battle as well as the victims of terrorism. A siren is sounded at 8:00 pm and again at 11:00 am the following morning. It is customary to stop and stand in silence during the sirens. Local radio and television channels will also broadcast programs commemorating the fallen, as well as events leading to the creation of Israel and its subsequent wars. Ceremonies are held both on campus and at Rabin Square. Immediately at the conclusion of Memorial Day (*Yom Hazikaron*), Israel's Independence Day begins.

**Israel Independence Day** - At the precise moment that Memorial Day ends, Independence Day (*Yom Haatzmaut*) begins - drawing an inseparable link between fallen soldiers and victims of

terrorism and the country's independence. The mood instantly changes as people celebrate Israel's independence. Ceremonies are held at night in Rabin Square, and the next day many people celebrate by getting together with friends and family for a barbeque (*mangal* or *al ha'esh*).

**Israel Independence Day** - At the precise moment that Memorial Day ends, Independence Day (*Yom Haatzmaut*) begins - drawing an inseparable link between fallen soldiers and victims of terrorism and the country's independence. The mood instantly changes as people celebrate Israel's independence. Ceremonies are held at night in Rabin Square, and the next day many people celebrate by getting together with friends and family for a barbeque (*mangal* or *al ha'esh*).

**Shavuot** - This holiday is otherwise known as *Chag Matan Torah*, the holiday to commemorate when the Jewish people received the *Torah* (first five books of the Bible) at Mount Sinai. Shavuot comes 49 days after Passover, and illustrates that while the children of Israel were physically released from bondage on Passover, they were redeemed from idolatry and immorality by receiving the *Torah* on Shavuot. On this holiday, it is customary to eat dairy products, particularly cheesecake, and study *Torah* through the night.

**Tisha B'Av** - Occurring on the 9th day of the Hebrew month of *Av*, this is a day of fasting and mourning in commemoration of tragedies that have befallen the Jewish people. According to tradition, both the First and Second Temples in Jerusalem were destroyed on this date.

If you would like to find out more about the Jewish holidays, a great resource is the Jewish Virtual Library: <http://www.jewishvirtuallibrary.org/jsource/Judaism/holidays.html>

## WORKING HOURS IN ISRAEL

The Israeli work week is from Sunday through Thursday, with a few offices also open on Friday mornings. The weekend for most office workers is Friday and Saturday. At Tel Aviv University, courses are held and administrative offices are open from Sunday through Thursday, although some academic activities do occur on Friday mornings. Stores in Israel are generally open from Sunday through Friday afternoon. Some malls and stores also open for Saturday evening shopping.

## TOURING AND ACTIVITIES

You should plan to travel extensively throughout Israel. For University-sponsored trips, students need a backpack large enough to carry two changes of clothes, sturdy walking shoes, and a sleeping bag (most youth hostels provide sleeping bags but some do not). Your sleeping bag can also double as an extra blanket in your dorm room during the winter months. If you are an avid hiker, you may want to bring a larger backpack, sleeping bag, hiking boots, a flashlight, and a mess kit. There may be some additional tours or activities that will be added during the year and may cost an additional fee. In such instances, participation is optional and the additional fee will be charged in Israel.

During your stay in Israel, there will be many opportunities for personal travel. You may wish to visit sites in Israel that are not included in the University-sponsored tours or return to those that particularly interest you.

If you plan to be away from campus for an extended period of time, please inform your program coordinator of your itinerary. Please include the date you plan to return to campus and a telephone number or address where you can be reached in the event of an emergency.

While the program places no travel prohibitions on you, we strongly urge you to seriously consider the potential dangers inherent in visiting countries with which Israel does not have diplomatic relations. Entry to and exit from these countries is not always easy, and TAU is not responsible for you should you decide to undertake such a trip. Additionally, TAU is not liable for any independent travel undertaken in the West Bank and the Gaza Strip.

We will be more than happy to assist you with suggested trips and places to visit. We will also be regularly updating you on the exciting events happening in and around the Tel Aviv area such as festivals, film events, conferences, and exhibitions.

## USEFUL ONLINE RESOURCES

### Resources for Travelers:

- Time Out Tel Aviv: <https://www.timeout.com/israel>

### Media Sites:

- Haaretz: <http://www.haaretz.com/>
- Jerusalem Post: <http://www.jpost.com/>
- Ynet (affiliated with Yediot Acharonot): <http://ynetnews.com>
- Times of Israel: <http://www.timesofisrael.com/>